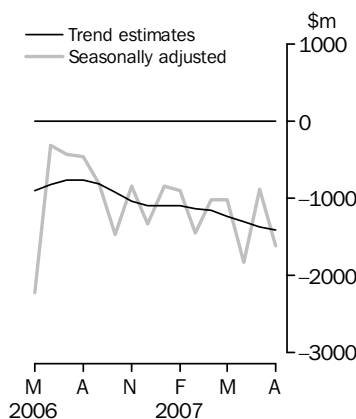


INTERNATIONAL TRADE IN GOODS AND SERVICES

AUSTRALIA

EMBARGO: 11.30AM (CANBERRA TIME) WED 3 OCT 2007

Balance on Goods and Services



KEY FIGURES

	June 2007	July 2007	August 2007	Jul 07 to Aug 07
	\$m	\$m	\$m	% change
TREND				
Balance on goods and services	-1 301	-1 368	-1 412	..
Credits (exports of goods & services)	18 275	18 327	18 375	—
Debits (imports of goods & services)	19 576	19 695	19 787	—
SEASONALLY ADJUSTED				
Balance on goods and services	-1 829	-883	-1 614	..
Credits (exports of goods & services)	17 924	18 317	18 638	2
Debits (imports of goods & services)	19 753	19 200	20 252	5

.. not applicable

— nil or rounded to zero (including null cells)

KEY POINTS

TREND ESTIMATES

- The provisional trend estimate of the balance on goods and services was a deficit of \$1,412m in August 2007, an increase of \$44m on the revised deficit in July.
- Goods and services credits rose \$48m to \$18,375m. Goods and services debits rose \$92m to \$19,787m.

SEASONALLY ADJUSTED ESTIMATES

- In seasonally adjusted terms, the balance on goods and services was a deficit of \$1,614m in August, an increase of \$731m on the revised deficit in July.
- Goods and services credits rose \$321m (2%) to \$18,638m. Non-rural and other goods rose \$372m (3%) while rural goods fell \$73m (4%). Services credits rose \$24m (1%).
- Goods and services debits rose \$1,052m (5%) to \$20,252m. Intermediate and other goods rose \$459m (6%), capital goods rose \$440m (14%) and consumption goods rose \$139m (3%). Services debits rose \$14m.

ORIGINAL ESTIMATES

- In original terms, the August 2007 balance on goods and services was a deficit of \$1,946m, an increase of \$1,073m on the revised deficit in July. Goods and services credits rose \$435m (2%) and goods and services debits rose \$1,508m (8%).
- In the two months to August, exports of non-rural and other goods were up \$1.1b (5%) while rural goods were down \$0.7b (15%) on the corresponding period in 2006-07.

INQUIRIES

For further information about these and related statistics, contact the National Information and Referral Service on 1300 135 070 or Tom Jebbink on Canberra (02) 6252 5540.

NOTES

FORTHCOMING ISSUES

ISSUE	RELEASE DATE
September 2007	1 November 2007
October 2007	3 December 2007
November 2007	10 January 2008
December 2007	4 February 2008
January 2008	6 March 2008
February 2008	7 April 2008

REVISIONS

Revisions were made to both the balance of payments and merchandise trade series to incorporate the latest available administrative and survey data. In original terms, these revisions have:

- increased the deficit on goods and services for July 2007 by \$33m
- increased the deficit on good and services for 2006–07 by \$8m.

From this issue, the European Union grouping used in merchandise trade country statistics will include Bulgaria and Romania, making a total of 27 countries. This has been applied to table 14 in this publication and will be reflected in the relevant time series spreadsheets in a future issue.

CHANGES TO FORTHCOMING ISSUES

Seasonally adjusted and trend estimates

The seasonally adjusted and trend estimates of goods and services will be revised in the September 2007 issue of this publication as a result of the annual seasonal reanalysis. This reanalysis reviews the seasonal factors in more detail than is possible in the monthly processing cycle and assesses the appropriateness of any existing prior corrections.

Recently, the ABS has started to implement improved methods of producing seasonally adjusted estimates, focused on the application of Autoregressive Integrated Moving Average (ARIMA) modelling techniques. The revision properties of the seasonally adjusted and trend estimates can be improved by the use of ARIMA modelling. ARIMA modelling relies on the characteristics of the series being analysed to project future period data. The projected values are temporary, intermediate values, that are only used internally to improve the estimation of the seasonal factors. The projected data do not affect the original estimates and are discarded at the end of the seasonal adjustment process.

From the 2007 annual seasonal reanalysis, goods and services estimates will use concurrent seasonal adjustment with ARIMA modelling where applicable to reduce the level of revision to seasonally adjusted estimates. For more information on ARIMA modelling see Feature article : Use of ARIMA modelling to reduce revisions, October 2004 issue of *Australian Economic Indicators* (cat. no. 1350.0).

AUSTRALIAN EXPORTERS

The publication, *Number and Characteristics of Australian Exporters, 2006-07* (cat. no. 5368.0.55.001) is scheduled for release on 13 November 2007.

Brian Pink
Australian Statistician

CONTENTS

page

Time series data	4
----------------------------	---

ANALYSIS

Analysis and comments	5
---------------------------------	---

TABLES

INTERNATIONAL TRADE IN GOODS AND SERVICES – BALANCE OF PAYMENTS BASIS

1 Goods and services, summary, seasonally adjusted and trend estimates	9
2 Goods and services, summary, original	10
3 Goods credits, original	11
4 Goods debits, original	12
5 Goods credits, seasonally adjusted	13
6 Goods debits, seasonally adjusted	14
7 Goods credits, trend estimates	15
8 Goods debits, trend estimates	16
9 Services, summary, original	17
10 Services, summary, seasonally adjusted and trend estimates	18
11 Services, original, quarterly	19

INTERNATIONAL MERCHANDISE TRADE – RECORDED TRADE BASIS

12 International merchandise exports, by commodity	20
13 International merchandise imports, by commodity	23
14 International merchandise trade, by country and country groups	26
15 International merchandise trade, by state	27

OTHER TABLES

16 Period average exchange rates per Australian dollar	28
---	----

OTHER INFORMATION

Explanatory Notes	29
Abbreviations	33
Appendix - Related articles	34

TIME SERIES DATA

TIME SERIES DATA

Data available free on the ABS web site <<http://www.abs.gov.au>> include longer time series of tables in this publication and additional spreadsheets and data cubes below:

31 Merchandise exports by Broad Economic Category (BEC)

32 Merchandise exports by industry of origin (ANZSIC)

33 Merchandise imports by Broad Economic Category (BEC)

34 Merchandise imports by Balance of Payments Broad Economic Category (BoPBEC)

35 Merchandise imports by industry of origin (ANZSIC)

36 Merchandise exports, state by country and country groups

37 Merchandise imports, state by country and country groups

91 Monthly seasonal adjustment factors and forward factors for 12 months.

Trade in Services data cubes are usually updated on an annual basis - with the March issue of 5368.0 for calendar year and with the September issue for financial year.

Financial year (cat. no. 5368.0.55.003)

1 International trade in services, credits, state by financial year

2 International trade in services, credits, financial year by state

3 International trade in services, debits, state by financial year

4 International trade in services, debits, financial year by state

5 International trade in services, credits, financial year by country and service

6 International trade in services, credits, service by financial year and by country

7 International trade in services, debits, financial year by country and service

8 International trade in services, debits, service by financial year and by country

9 International trade in services, financial year by detailed service

Calendar year (cat. no. 5368.0.55.004)

1 International trade in services, credits, state by calendar year

2 International trade in services, credits, calendar year by state

3 International trade in services, debits, state by calendar year

4 International trade in services, debits, calendar year by state

5 International trade in services, credits, calendar year by country and service

6 International trade in services, credits, service by calendar year and by country

7 International trade in services, debits, calendar year by country and service

8 International trade in services, debits, service by calendar year and by country

9 International trade in services, calendar year by detailed service

ANALYSIS AND COMMENTS

BALANCE ON GOODS AND SERVICES

The trend estimate of the balance on goods and services in August 2007 was a deficit of \$1,412m, an increase of \$44m on the deficit in July.

In seasonally adjusted terms, the balance on goods and services in August 2007 was a deficit of \$1,614m, an increase of \$731m on the deficit in July.

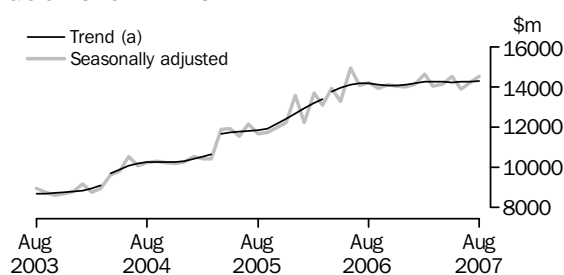
EXPORTS OF GOODS AND SERVICES

The trend estimate of goods and services credits rose \$48m between July and August to \$18,375m.

In seasonally adjusted terms, goods and services credits rose \$321m (2%) to \$18,638m. Non-rural goods rose \$285m (3%) and other goods rose \$87m (8%) while rural goods fell \$73m (4%). Services credits rose \$24m (1%).

Exports of goods

GOODS CREDITS



(a) Trend breaks of \$430m to April 2004, \$819m to April 2005 and \$150m to April 2006 have been applied.

RURAL GOODS

The trend estimate of rural goods exports fell \$24m (1%) to \$1,851m.

In seasonally adjusted terms, exports of rural goods fell \$73m (4%) to \$1,848m.

The components contributing to the fall in the seasonally adjusted series were:

- cereal grains and cereal preparations, down \$151m (40%)
- wool and sheepskins, down \$12m (5%).

Partly offsetting these effects were:

- other rural, up \$58m (7%)
- meat and meat preparations, up \$31m (6%).

In original terms, exports of rural goods fell \$22m (1%) to \$1,878m.

NON-RURAL GOODS

The trend estimate of non-rural goods exports rose \$26m to \$11,184m.

In seasonally adjusted terms, exports of non-rural goods rose \$285m (3%) to \$11,436m.

The main components contributing to the rise in the seasonally adjusted series were:

- other mineral fuels, up \$301m (26%)
- metal ores and minerals, up \$110m (4%)
- coal, coke and briquettes, up \$72m (4%).

ANALYSIS AND COMMENTS *continued*

Exports of goods *continued*

NON-RURAL GOODS *continued*

Partly offsetting these effects were:

- other non-rural, down \$93m (7%)
- metals (excluding non-monetary gold), down \$90m (7%)
- transport equipment, down \$26m (5%).

In original terms, exports of non-rural goods rose \$307m (3%) to \$11,738m.

OTHER GOODS

The trend estimate of other goods exports rose \$20m (2%) to \$1,248m.

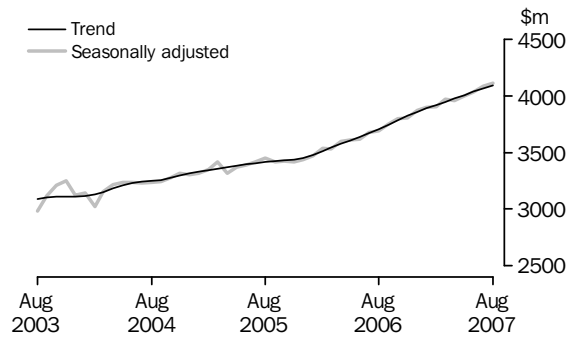
In seasonally adjusted terms, exports of other goods rose \$87m (8%) to \$1,247m.

The component contributing to the rise in the seasonally adjusted series was non-monetary gold, up \$95m (9%).

In original terms, exports of other goods rose \$94m (8%) to \$1,253m.

Exports of services

SERVICES CREDITS



In trend terms, services credits rose \$26m (1%) to \$4,092m.

Seasonally adjusted, services credits rose \$24m (1%) to \$4,108m.

The components that contributed to the rise in the seasonally adjusted estimates were:

- other services, up \$16m (1%)
- travel services, up \$15m (1%).

Partly offsetting these effects was the transportation services component, down \$8m (1%).

Seasonally adjusted, tourism related services credits rose \$18m (1%) to \$2,614m. This series is seasonally adjusted independently to the series that comprise services credits.

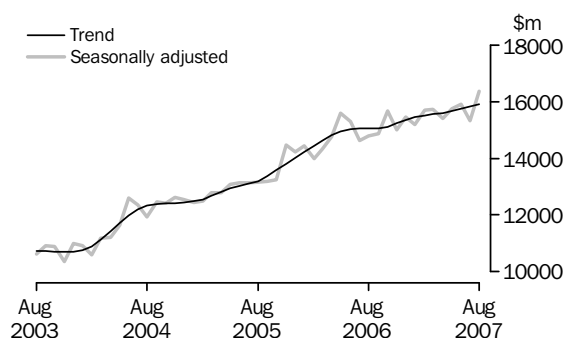
IMPORTS OF GOODS AND SERVICES

The trend estimate of goods and services debits rose \$92m between July and August to \$19,787m.

In seasonally adjusted terms, goods and services debits rose \$1,052m (5%) to \$20,252m. Capital goods rose \$440m (14%), intermediate and other merchandise goods rose \$409m (6%), consumption goods rose \$139m (3%) and other goods rose \$50m (6%). Services debits rose \$14m.

Imports of goods

GOODS DEBITS



CONSUMPTION GOODS

The trend estimate of imports of consumption goods fell \$11m to \$4,584m.

In seasonally adjusted terms, imports of consumption goods rose \$139m (3%) to \$4,698m.

The main components contributing to the rise in the seasonally adjusted estimates were:

- non-industrial transport equipment, up \$103m (9%)
- food and beverages, mainly for consumption, up \$43m (7%)
- textiles, clothing and footwear, up \$13m (2%).

Partly offsetting these effects was the consumption goods n.e.s. component, down \$22m (2%).

In original terms, imports of consumption goods rose \$424m (9%) to \$5,068m.

CAPITAL GOODS

The trend estimate of imports of capital goods fell \$4m to \$3,490m.

In seasonally adjusted terms, imports of capital goods rose \$440m (14%) to \$3,647m.

The main components contributing to the rise in the seasonally adjusted estimates were:

- civil aircraft, up \$289m
- industrial transport equipment n.e.s., up \$79m (16%)
- ADP equipment, up \$61m (11%)
- telecommunications equipment, up \$14m (3%).

In original terms, imports of capital goods rose \$530m (16%) to \$3,778m.

INTERMEDIATE AND OTHER MERCHANDISE GOODS

The trend estimate of imports of intermediate and other merchandise goods rose \$21m to \$6,961m.

In seasonally adjusted terms, imports of intermediate and other merchandise goods rose \$409m (6%) to \$7,119m.

ANALYSIS AND COMMENTS *continued*

Imports of goods continued

INTERMEDIATE AND OTHER MERCHANDISE GOODS *continued*

The main components contributing to the rise in the seasonally adjusted estimates were:

- fuels and lubricants, up \$403m (22%), driven by crude petroleum, up \$218m (19%), and other petroleum products, up \$106m (22%)
- parts for transport equipment, up \$71m (10%)
- other merchandise goods, up \$32m (37%).

Partly offsetting these effects were:

- primary industrial supplies n.e.s., down \$67m (41%)
- iron and steel, down \$30m (9%).

In original terms, imports of intermediate and other merchandise goods rose \$681m (10%) to \$7,405m.

OTHER GOODS

The trend estimate of imports of other goods rose \$63m (8%) to \$873m.

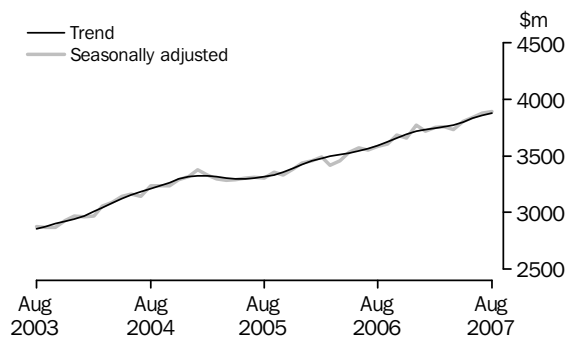
In both original and seasonally adjusted terms, other goods debits rose \$50m (6%) to \$899m.

The components contributing to the rise in both original and seasonally adjusted estimates were:

- non-monetary gold, up \$35m (5%)
- goods for processing, up \$12m
- repairs on goods, up \$3m (21%).

Imports of services

SERVICES DEBITS



In trend terms, services debits rose \$23m (1%) to \$3,879m.

Seasonally adjusted, services debits rose \$14m to \$3,889m.

The main component contributing to the rise in the seasonally adjusted estimates was other services, up \$18m (2%).

Seasonally adjusted, tourism related services debits rose \$3m to \$1,993m. This series is seasonally adjusted independently to the series that comprise services debits.

GOODS AND SERVICES (a), Summary: Seasonally Adjusted and Trend Estimates

Months	BALANCE	CREDITS					DEBITS					
	On goods and services	Total goods and services	Total goods	Rural goods (b)	Non-rural and other goods (b)	Total services	Total goods and services	Total goods	Consumption goods	Capital goods	Intermediate and other goods	Total services
	\$m	\$m	\$m	\$m	\$m	\$m	\$m	\$m	\$m	\$m	\$m	\$m
SEASONALLY ADJUSTED												
2006												
June	-316	18 557	14 943	2 152	12 791	3 614	-18 873	-15 302	-4 408	-3 447	-7 447	-3 572
July	-432	17 749	14 075	2 216	11 859	3 674	-18 181	-14 633	-4 432	-3 066	-7 135	-3 548
August	-458	17 905	14 217	2 245	11 972	3 688	-18 363	-14 778	-4 427	-3 274	-7 077	-3 584
September	-816	17 656	13 908	2 216	11 692	3 748	-18 472	-14 871	-4 406	-3 301	-7 164	-3 601
October	-1 471	17 894	14 096	2 210	11 886	3 798	-19 364	-15 681	-4 673	-3 478	-7 529	-3 684
November	-846	17 813	14 011	2 207	11 803	3 802	-18 659	-15 000	-4 618	-3 364	-7 017	-3 660
December	-1 335	17 879	14 007	2 111	11 896	3 872	-19 214	-15 447	-4 627	-3 665	-7 155	-3 767
2007												
January	-843	18 053	14 155	2 068	12 087	3 898	-18 896	-15 177	-4 645	-3 460	-7 072	-3 719
February	-901	18 549	14 648	2 085	12 563	3 901	-19 450	-15 702	-4 924	-3 577	-7 201	-3 748
March	-1 454	18 007	14 035	2 056	11 979	3 972	-19 461	-15 706	-4 643	-3 509	-7 555	-3 755
April	-1 020	18 104	14 145	1 959	12 186	3 959	-19 125	-15 393	-4 675	-3 341	-7 377	-3 732
May	-1 020	18 520	14 524	1 946	12 578	3 996	-19 540	-15 739	-4 588	-3 711	-7 440	-3 801
June	-1 829	17 924	13 895	1 841	12 053	4 029	-19 753	-15 919	-4 561	-3 563	-7 795	-3 834
July	-883	18 317	14 233	1 921	12 311	4 084	-19 200	-15 325	-4 559	-3 207	-7 559	-3 875
August	-1 614	18 638	14 531	1 848	12 683	4 108	-20 252	-16 363	-4 698	-3 647	-8 018	-3 889
TREND ESTIMATES												
2006												
June	-823	17 739	14 103	2 182	11 921	3 635	-18 561	-15 020	-4 391	-3 313	-7 315	-3 541
July	-763	17 848	14 181	2 200	11 981	3 667	-18 611	-15 048	-4 431	-3 292	-7 325	-3 563
August	-768	17 865	14 162	2 214	11 949	3 703	-18 634	-15 043	-4 463	-3 293	-7 287	-3 591
September	-812	17 860	14 118	2 216	11 902	3 742	-18 672	-15 049	-4 502	-3 324	-7 222	-3 623
October	-920	17 854	14 071	2 205	11 867	3 782	-18 774	-15 117	-4 558	-3 390	-7 169	-3 658
November	-1 036	17 886	14 064	2 178	11 886	3 822	-18 922	-15 233	-4 622	-3 456	-7 155	-3 689
December	-1 096	17 969	14 110	2 142	11 968	3 858	-19 065	-15 350	-4 678	-3 504	-7 168	-3 715
2007												
January	-1 096	18 081	14 191	2 103	12 088	3 890	-19 177	-15 445	-4 715	-3 530	-7 200	-3 731
February	-1 099	18 154	14 236	2 062	12 174	3 919	-19 253	-15 511	-4 720	-3 533	-7 258	-3 742
March	-1 133	18 195	14 249	2 020	12 230	3 946	-19 329	-15 574	-4 698	-3 524	-7 352	-3 754
April	-1 155	18 216	14 241	1 979	12 262	3 975	-19 371	-15 598	-4 664	-3 512	-7 422	-3 773
May	-1 231	18 238	14 232	1 940	12 292	4 005	-19 469	-15 671	-4 631	-3 501	-7 539	-3 798
June	-1 301	18 275	14 238	1 905	12 333	4 037	-19 576	-15 749	-4 607	-3 495	-7 647	-3 827
July	-1 368	18 327	14 261	1 875	12 385	4 066	-19 695	-15 840	-4 595	-3 494	-7 750	-3 856
August	-1 412	18 375	14 283	1 851	12 432	4 092	-19 787	-15 908	-4 584	-3 490	-7 834	-3 879

(a) For sign conventions, see paragraph 10 of the Explanatory Notes.

(b) For all time periods, estimates for sugar, sugar preparations and honey are included in Non-rural and other goods.

GOODS AND SERVICES(a), Summary: Original

	BALANCE	CREDITS					DEBITS					
	<i>On goods and services</i>	<i>Total goods and services</i>	<i>Total goods</i>	<i>Rural goods(b)</i>	<i>Non-rural and other goods(b)</i>	<i>Total services</i>	<i>Total goods and services</i>	<i>Total goods</i>	<i>Con-sumption goods</i>	<i>Capital goods</i>	<i>Inter-mediate and other goods</i>	<i>Total services</i>
	\$m	\$m	\$m	\$m	\$m	\$m	\$m	\$m	\$m	\$m	\$m	\$m
FINANCIAL YEAR												
2004-05	-22 626	167 562	127 867	25 687	102 180	39 695	-190 188	-150 873	-47 143	-35 967	-67 763	-39 315
2005-06	-14 520	196 274	154 425	25 312	129 113	41 849	-210 794	-169 716	-50 322	-39 996	-79 398	-41 078
2006-07	-12 041	215 791	169 546	25 116	144 430	46 245	-227 832	-183 465	-54 999	-41 176	-87 290	-44 367
MONTHS												
2006												
June	-783	18 188	14 861	2 167	12 694	3 327	-18 971	-15 314	-4 288	-3 651	-7 375	-3 657
July	101	18 184	14 467	2 205	12 262	3 717	-18 083	-14 420	-4 391	-3 027	-7 002	-3 663
August	-784	18 227	14 456	2 261	12 195	3 771	-19 011	-15 481	-4 768	-3 394	-7 319	-3 530
September	-1 484	17 756	14 151	2 266	11 885	3 605	-19 240	-15 336	-4 810	-3 318	-7 208	-3 904
October	-1 787	18 701	14 760	2 277	12 483	3 941	-20 488	-16 666	-5 276	-3 654	-7 736	-3 822
November	-1 563	17 861	13 999	2 213	11 786	3 862	-19 424	-15 881	-5 143	-3 626	-7 112	-3 543
December	-96	18 688	14 799	2 201	12 598	3 889	-18 784	-14 816	-4 351	-3 658	-6 807	-3 968
2007												
January	-2 036	16 559	12 723	1 651	11 072	3 836	-18 595	-14 717	-4 371	-3 229	-7 117	-3 878
February	-237	17 330	13 351	1 978	11 373	3 979	-17 567	-14 281	-4 387	-3 026	-6 868	-3 286
March	-1 030	18 139	14 030	2 155	11 875	4 109	-19 169	-15 538	-4 412	-3 449	-7 677	-3 631
April	-473	17 984	13 956	1 927	12 029	4 028	-18 457	-14 808	-4 330	-3 226	-7 252	-3 649
May	-775	18 673	14 861	2 085	12 776	3 812	-19 448	-15 832	-4 416	-3 821	-7 595	-3 616
June	-1 877	17 689	13 993	1 897	12 096	3 696	-19 566	-15 689	-4 344	-3 748	-7 597	-3 877
July	-873	18 634	14 490	1 900	12 590	4 144	-19 507	-15 465	-4 644	-3 248	-7 573	-4 042
August	-1 946	19 069	14 869	1 878	12 991	4 200	-21 015	-17 150	-5 068	-3 778	-8 304	-3 865
FINANCIAL YEAR TO DATE												
2 months ended August												
2006	-683	36 411	28 923	4 466	24 457	7 488	-37 094	-29 901	-9 159	-6 421	-14 321	-7 193
2007	-2 819	37 703	29 359	3 778	25 581	8 344	-40 522	-32 615	-9 712	-7 026	-15 877	-7 907

(a) For sign conventions, see paragraph 10 of the Explanatory Notes.

(b) For all time periods, estimates for sugar, sugar preparations and honey are included in Non-rural and other goods.

	2004-05	2005-06	2006-07	Jun 2007	Jul 2007	Aug 2007	2 MONTHS ENDED AUGUST		Change
							2006	2007	
							\$m	\$m	
Total goods credits	127 867	154 425	169 546	13 993	14 490	14 869	28 923	29 359	1.5
<i>Rural goods</i>	25 687	25 312	25 116	1 897	1 900	1 878	4 466	3 778	-15.4
Meat and meat preparations	6 937	6 709	7 078	528	516	521	1 174	1 037	-11.7
Cereal grains and cereal preparations	5 159	4 852	4 171	198	357	221	970	578	-40.4
Wool and sheepskins	2 838	2 544	3 065	299	201	142	366	343	-6.3
Other rural(a)	10 753	11 207	10 802	872	826	994	1 956	1 820	-7.0
<i>Non-rural goods</i>	94 328	118 164	131 805	10 799	11 431	11 738	22 369	23 169	3.6
Metal ores and minerals	19 854	28 936	35 314	2 903	3 209	3 198	5 900	6 407	8.6
Coal, coke and briquettes	17 236	24 353	21 950	1 665	1 602	1 779	4 006	3 381	-15.6
Other mineral fuels	11 151	13 220	15 642	1 290	1 348	1 558	2 861	2 906	1.6
Metals (excl. non-monetary gold)	8 668	11 278	14 830	1 087	1 309	1 169	2 326	2 478	6.5
Machinery	7 488	8 087	8 437	737	759	759	1 479	1 518	2.6
Transport equipment	4 943	5 316	4 645	393	457	469	712	926	30.1
Other manufactures	14 043	14 926	16 192	1 384	1 457	1 519	2 699	2 976	10.3
Other non-rural (incl. sugar and beverages)	10 945	12 048	14 795	1 340	1 290	1 287	2 386	2 577	8.0
<i>Other goods</i>	7 852	10 949	12 625	1 297	1 159	1 253	2 088	2 412	15.5
Goods for processing	241	368	417	43	23	19	78	42	-46.2
Repairs on goods	67	74	90	12	8	8	13	16	23.1
Goods procured in ports by carriers	1 072	1 420	1 379	117	114	117	259	231	-10.8
Non-monetary gold	6 472	9 087	10 739	1 125	1 014	1 109	1 738	2 123	22.2

(a) For all time periods, estimates for sugar, sugar preparations and honey are included in Other non-rural.

GOODS DEBITS (a): Original

							2 MONTHS ENDED AUGUST		Change
	2004-05	2005-06	2006-07	Jun 2007	Jul 2007	Aug 2007	2006	2007	
	\$m	\$m	\$m	\$m	\$m	\$m	\$m	\$m	
Total goods debits	-150 873	-169 716	-183 465	-15 689	-15 465	-17 150	-29 901	-32 615	9.1
<i>Consumption goods</i>	-47 143	-50 322	-54 999	-4 344	-4 644	-5 068	-9 159	-9 712	6.0
Food and beverages, mainly for consumption	-5 767	-6 170	-7 181	-501	-580	-703	-1 091	-1 283	17.6
Household electrical items	-4 024	-4 291	-4 609	-360	-415	-456	-749	-871	16.3
Non-industrial transport equipment	-13 003	-13 589	-14 889	-1 274	-1 177	-1 277	-2 390	-2 454	2.7
Textiles, clothing and footwear	-5 811	-6 365	-6 806	-484	-614	-657	-1 240	-1 271	2.5
Toys, books and leisure goods	-3 740	-4 055	-4 330	-355	-328	-403	-729	-731	0.3
Consumption goods n.e.s.	-14 798	-15 852	-17 184	-1 370	-1 530	-1 572	-2 960	-3 102	4.8
<i>Capital goods</i>	-35 967	-39 996	-41 176	-3 748	-3 248	-3 778	-6 421	-7 026	9.4
Machinery and industrial equipment	-13 409	-14 328	-15 302	-1 253	-1 255	-1 408	-2 492	-2 663	6.9
ADP equipment	-5 761	-6 073	-6 847	-661	-588	-573	-1 070	-1 161	8.5
Telecommunications equipment	-4 568	-5 334	-5 333	-479	-435	-459	-873	-894	2.4
Civil aircraft	-2 496	-2 967	-1 674	-262	-10	-299	-287	-309	7.7
Industrial transport equipment n.e.s.	-4 981	-5 495	-6 433	-616	-497	-573	-782	-1 070	36.8
Capital goods n.e.s.	-4 752	-5 799	-5 587	-477	-463	-466	-917	-929	1.3
<i>Intermediate and other merchandise goods</i>	-63 730	-72 722	-79 868	-6 744	-6 724	-7 405	-13 120	-14 129	7.7
Food and beverages, mainly for industry	-659	-651	-819	-69	-73	-73	-117	-146	24.8
Primary industrial supplies n.e.s.	-1 052	-1 193	-1 555	-106	-138	-114	-239	-252	5.4
Fuels and lubricants	-14 720	-21 014	-21 431	-2 013	-1 799	-2 202	-3 801	-4 001	5.3
Parts for transport equipment	-7 008	-7 314	-8 356	-691	-698	-818	-1 399	-1 516	8.4
Parts for ADP equipment	-1 787	-1 857	-1 621	-117	-102	-108	-307	-210	-31.6
Other parts for capital goods	-9 485	-10 154	-11 764	-962	-1 021	-1 025	-1 863	-2 046	9.8
Organic and inorganic chemicals	-3 622	-4 134	-4 407	-297	-383	-413	-668	-796	19.2
Paper and paperboard	-2 313	-2 302	-2 371	-173	-217	-231	-413	-448	8.5
Textile yarn and fabrics	-1 452	-1 361	-1 365	-111	-116	-117	-250	-233	-6.8
Iron and steel	-3 008	-3 239	-3 814	-323	-331	-323	-531	-654	23.2
Plastics	-2 428	-2 517	-2 958	-232	-242	-262	-468	-504	7.7
Processed industrial supplies n.e.s.	-15 142	-15 856	-17 788	-1 467	-1 517	-1 600	-2 824	-3 117	10.4
Other merchandise goods	-1 054	-1 130	-1 619	-183	-87	-119	-240	-206	-14.2
<i>Other goods</i>	-4 033	-6 676	-7 422	-853	-849	-899	-1 201	-1 748	45.5
Goods for processing	-243	-445	-507	-5	-1	-13	-206	-14	-93.2
Repairs on goods	-182	-115	-131	-10	-14	-17	-27	-31	14.8
Goods procured in ports by carriers	-1 049	-1 406	-1 468	-115	-126	-126	-284	-252	-11.3
Non-monetary gold	-2 559	-4 710	-5 316	-723	-708	-743	-684	-1 451	112.1

(a) For sign conventions, see paragraph 10 of the Explanatory Notes.

GOODS CREDITS: Seasonally Adjusted

	Nov 2006	Dec 2006	Jan 2007	Feb 2007	Mar 2007	Apr 2007	May 2007	Jun 2007	Jul 2007	Aug 2007
	\$m	\$m	\$m	\$m	\$m	\$m	\$m	\$m	\$m	\$m
Total goods credits	14 011	14 007	14 155	14 648	14 035	14 145	14 524	13 895	14 233	14 531
<i>Rural goods</i>	2 207	2 111	2 068	2 085	2 056	1 959	1 946	1 841	1 921	1 848
Meat and meat preparations	637	633	647	616	587	552	522	497	511	542
Cereal grains and cereal preparations	361	325	280	291	279	279	285	237	373	222
Wool and sheepskins	239	250	271	282	282	275	273	265	222	210
Other rural(a)	970	902	870	896	908	853	865	841	816	874
<i>Non-rural goods</i>	10 964	10 859	11 097	11 445	10 985	11 126	11 365	10 761	11 151	11 436
Metal ores and minerals	2 934	3 043	2 858	3 169	2 737	2 947	3 045	2 934	3 099	3 209
Coal, coke and briquettes	1 823	1 800	1 909	1 813	1 837	1 770	1 798	1 686	1 617	1 689
Other mineral fuels	1 230	1 276	1 275	1 327	1 294	1 381	1 283	1 349	1 169	1 470
Metals (excl. non-monetary gold)	1 196	1 269	1 300	1 336	1 291	1 338	1 351	1 036	1 303	1 213
Machinery	669	673	707	692	728	734	729	726	726	712
Transport equipment	394	381	365	404	381	382	433	382	479	453
Other manufactures	1 411	1 266	1 419	1 397	1 491	1 253	1 378	1 368	1 421	1 448
Other non-rural (incl. sugar and beverages)	1 308	1 151	1 264	1 307	1 226	1 321	1 347	1 280	1 336	1 243
<i>Other goods</i>	839	1 037	990	1 118	994	1 060	1 213	1 292	1 160	1 247
Goods for processing(b)	52	14	36	28	61	9	55	43	23	19
Repairs on goods(b)	6	7	5	6	10	7	9	12	8	8
Goods procured in ports by carriers	113	117	115	112	116	118	112	112	115	111
Non-monetary gold(b)	668	899	834	972	807	926	1 037	1 125	1 014	1 109

(a) For all time periods, estimates for sugar, sugar preparations and honey are included in Other non-rural.

(b) This component is not seasonally adjusted.

GOODS DEBITS(a): Seasonally Adjusted

	Nov 2006	Dec 2006	Jan 2007	Feb 2007	Mar 2007	Apr 2007	May 2007	Jun 2007	Jul 2007	Aug 2007
	\$m	\$m	\$m	\$m	\$m	\$m	\$m	\$m	\$m	\$m
Total goods debits	-15 000	-15 447	-15 177	-15 702	-15 706	-15 393	-15 739	-15 919	-15 325	-16 363
<i>Consumption goods</i>	-4 618	-4 627	-4 645	-4 924	-4 643	-4 675	-4 588	-4 561	-4 559	-4 698
Food and beverages, mainly for consumption	-646	-618	-606	-682	-640	-592	-597	-554	-624	-667
Household electrical items	-397	-387	-360	-379	-382	-340	-397	-409	-421	-418
Non-industrial transport equipment	-1 255	-1 277	-1 293	-1 288	-1 268	-1 383	-1 167	-1 151	-1 156	-1 259
Textiles, clothing and footwear	-583	-573	-564	-603	-551	-547	-564	-578	-563	-576
Toys, books and leisure goods	-351	-357	-371	-381	-390	-376	-375	-368	-341	-347
Consumption goods n.e.s.	-1 387	-1 415	-1 451	-1 591	-1 411	-1 436	-1 489	-1 500	-1 454	-1 432
<i>Capital goods</i>	-3 364	-3 665	-3 460	-3 577	-3 509	-3 341	-3 711	-3 563	-3 207	-3 647
Machinery and industrial equipment	-1 312	-1 267	-1 311	-1 311	-1 357	-1 314	-1 232	-1 276	-1 249	-1 245
ADP equipment	-558	-597	-606	-658	-596	-562	-559	-546	-544	-605
Telecommunications equipment	-467	-450	-447	-402	-429	-438	-468	-466	-435	-449
Civil aircraft(b)	-24	-352	-27	-57	-14	-39	-414	-262	-10	-299
Industrial transport equipment n.e.s.	-522	-539	-602	-702	-636	-538	-569	-544	-504	-583
Capital goods n.e.s.	-481	-462	-467	-448	-477	-451	-469	-469	-466	-467
<i>Intermediate and other merchandise goods</i>	-6 562	-6 678	-6 470	-6 490	-7 061	-6 784	-6 892	-6 942	-6 710	-7 119
Food and beverages, mainly for industry	-74	-93	-63	-70	-68	-70	-67	-71	-69	-72
Primary industrial supplies n.e.s.(c)	-114	-140	-118	-146	-151	-151	-91	-126	-163	-96
Fuels and lubricants(b)	-1 523	-1 881	-1 519	-1 512	-1 877	-1 769	-2 058	-2 013	-1 799	-2 202
Parts for transport equipment	-692	-688	-687	-720	-731	-705	-683	-706	-688	-759
Parts for ADP equipment	-152	-152	-137	-109	-118	-111	-115	-101	-101	-103
Other parts for capital goods	-952	-967	-1 089	-1 015	-1 057	-1 042	-1 026	-987	-973	-977
Organic and inorganic chemicals(c)	-574	-267	-394	-374	-369	-365	-342	-338	-396	-392
Paper and paperboard	-190	-192	-197	-204	-196	-205	-209	-193	-216	-214
Textile yarn and fabrics	-118	-115	-111	-116	-114	-116	-108	-107	-106	-104
Iron and steel	-385	-297	-345	-327	-364	-335	-299	-333	-329	-299
Plastics	-247	-254	-242	-248	-256	-247	-257	-252	-251	-255
Processed industrial supplies n.e.s.	-1 451	-1 475	-1 482	-1 565	-1 480	-1 587	-1 528	-1 531	-1 533	-1 526
Other merchandise goods(b)	-90	-157	-85	-83	-280	-81	-108	-183	-87	-119
<i>Other goods</i>	-455	-477	-602	-711	-494	-593	-548	-853	-849	-899
Goods for processing(b)	-1	-81	-50	-29	-112	-1	-1	-5	-1	-13
Repairs on goods(b)	-8	-7	-10	-17	-11	-8	-10	-10	-14	-17
Goods procured in ports by carriers(b)	-122	-120	-110	-110	-109	-116	-116	-115	-126	-126
Non-monetary gold(d)	-324	-269	-432	-555	-262	-468	-421	-723	-708	-743

(a) For sign conventions, see paragraph 10 of the Explanatory Notes.

(b) These components are not seasonally adjusted.

(c) In using these seasonally adjusted series, care should be exercised because of the difficulties associated with reliably estimating the seasonal pattern.

(d) From October 1995, this component is not seasonally adjusted.

GOODS CREDITS: Trend Estimates

	Nov 2006	Dec 2006	Jan 2007	Feb 2007	Mar 2007	Apr 2007	May 2007	Jun 2007	Jul 2007	Aug 2007
	\$m	\$m	\$m	\$m	\$m	\$m	\$m	\$m	\$m	\$m
Total goods credits	14 064	14 110	14 191	14 236	14 249	14 241	14 232	14 238	14 261	14 283
<i>Rural goods</i>	2 178	2 142	2 103	2 062	2 020	1 979	1 940	1 905	1 875	1 851
Meat and meat preparations	635	636	629	610	584	557	536	521	511	508
Cereal grains and cereal preparations	373	334	301	283	278	279	281	281	280	278
Wool and sheepskins	245	256	268	277	279	275	265	252	239	225
Other rural(a)	925	916	906	892	878	867	858	851	845	840
<i>Non-rural goods</i>	10 923	10 995	11 089	11 141	11 154	11 142	11 132	11 137	11 158	11 184
Metal ores and minerals	2 964	2 968	2 967	2 950	2 940	2 951	2 981	3 024	3 073	3 111
Coal, coke and briquettes	1 819	1 821	1 833	1 836	1 819	1 786	1 748	1 711	1 678	1 657
Other mineral fuels	1 286	1 283	1 294	1 305	1 311	1 314	1 315	1 318	1 325	1 334
Metals (excl. non-monetary gold)	1 226	1 261	1 294	1 313	1 310	1 292	1 266	1 241	1 220	1 204
Machinery	683	685	693	705	717	724	727	727	725	724
Transport equipment	390	390	386	383	387	397	411	425	439	450
Other manufactures	1 350	1 366	1 379	1 383	1 381	1 378	1 379	1 385	1 396	1 411
Other non-rural (incl. sugar and beverages)	1 205	1 222	1 242	1 266	1 288	1 300	1 306	1 306	1 301	1 293
<i>Other goods</i>	963	973	1 000	1 033	1 076	1 120	1 160	1 196	1 228	1 248
Goods for processing	25	28	32	36	38	38	37	34	31	27
Repairs on goods	6	6	6	7	8	9	9	9	9	9
Goods procured in ports by carriers	111	112	113	115	115	115	114	114	113	113
Non-monetary gold	821	827	848	876	915	958	999	1 039	1 075	1 099

(a) For all time periods, estimates for sugar, sugar preparations and honey are included in Other non-rural.

GOODS DEBITS(a): Trend Estimates

	Nov 2006	Dec 2006	Jan 2007	Feb 2007	Mar 2007	Apr 2007	May 2007	Jun 2007	Jul 2007	Aug 2007
	\$m	\$m	\$m	\$m	\$m	\$m	\$m	\$m	\$m	\$m
Total goods debits	-15 233	-15 350	-15 445	-15 511	-15 574	-15 598	-15 671	-15 749	-15 840	-15 908
<i>Consumption goods</i>	-4 622	-4 678	-4 715	-4 720	-4 698	-4 664	-4 631	-4 607	-4 595	-4 584
Food and beverages, mainly for consumption	-612	-628	-636	-633	-623	-611	-605	-605	-610	-615
Household electrical items	-395	-388	-379	-372	-371	-378	-388	-400	-410	-419
Non-industrial transport equipment	-1 265	-1 284	-1 298	-1 296	-1 281	-1 257	-1 232	-1 209	-1 193	-1 183
Textiles, clothing and footwear	-575	-577	-575	-571	-567	-564	-564	-566	-568	-569
Toys, books and leisure goods	-355	-362	-370	-377	-380	-378	-371	-364	-356	-348
Consumption goods n.e.s.	-1 420	-1 439	-1 457	-1 471	-1 476	-1 476	-1 471	-1 465	-1 459	-1 450
<i>Capital goods</i>	-3 456	-3 504	-3 530	-3 533	-3 524	-3 512	-3 501	-3 495	-3 494	-3 490
Machinery and industrial equipment	-1 291	-1 308	-1 318	-1 317	-1 310	-1 298	-1 283	-1 267	-1 252	-1 241
ADP equipment	-589	-603	-610	-607	-596	-581	-569	-561	-559	-559
Telecommunications equipment	-448	-444	-438	-435	-435	-440	-446	-451	-453	-456
Civil aircraft	-120	-102	-93	-95	-112	-138	-169	-200	-225	-237
Industrial transport equipment n.e.s.	-543	-581	-607	-616	-610	-592	-569	-551	-539	-529
Capital goods n.e.s.	-464	-467	-465	-463	-462	-463	-464	-466	-467	-468
<i>Intermediate and other merchandise goods</i>	-6 568	-6 589	-6 630	-6 687	-6 755	-6 819	-6 869	-6 907	-6 940	-6 961
Food and beverages, mainly for industry	-74	-75	-74	-72	-70	-69	-69	-69	-70	-71
Primary industrial supplies n.e.s.	-136	-138	-138	-137	-136	-134	-131	-127	-124	-119
Fuels and lubricants	-1 658	-1 633	-1 643	-1 684	-1 753	-1 830	-1 905	-1 972	-2 032	-2 073
Parts for transport equipment	-699	-703	-705	-706	-706	-705	-705	-707	-712	-716
Parts for ADP equipment	-151	-143	-134	-125	-117	-112	-108	-105	-103	-102
Other parts for capital goods	-971	-999	-1 024	-1 040	-1 043	-1 034	-1 018	-1 002	-986	-977
Organic and inorganic chemicals	-401	-398	-386	-371	-360	-357	-361	-365	-369	-377
Paper and paperboard	-193	-194	-195	-198	-200	-203	-204	-206	-209	-211
Textile yarn and fabrics	-116	-115	-115	-115	-114	-112	-110	-108	-106	-104
Iron and steel	-332	-340	-342	-340	-336	-332	-328	-323	-317	-312
Plastics	-247	-248	-249	-250	-251	-252	-253	-253	-254	-254
Processed industrial supplies n.e.s.	-1 468	-1 483	-1 499	-1 516	-1 530	-1 537	-1 539	-1 537	-1 535	-1 530
Other merchandise goods	-121	-121	-126	-134	-141	-142	-137	-131	-124	-115
<i>Other goods</i>	-587	-580	-570	-571	-597	-604	-670	-740	-810	-873
Goods for processing	-30	-38	-50	-61	-64	-12	-9	-7	-6	-6
Repairs on goods	-10	-10	-10	-11	-11	-11	-11	-12	-13	-14
Goods procured in ports by carriers	-124	-117	-113	-111	-111	-113	-116	-119	-122	-124
Non-monetary gold	-424	-415	-397	-389	-410	-467	-533	-602	-669	-729

(a) For sign conventions, see paragraph 10 of the Explanatory Notes.

SERVICES (a)(b), Summary: Original

							2 MONTHS ENDED AUGUST		Change %
	2004-05	2005-06	2006-07	Jun 2007	Jul 2007	Aug 2007	2006	2007	
	\$m	\$m	\$m	\$m	\$m	\$m	\$m	\$m	
Services credits	39 695	41 849	46 245	3 696	4 144	4 200	7 488	8 344	11.4
<i>Transportation services</i>	8 002	8 208	8 615	658	763	763	1 414	1 526	7.9
Freight	704	608	607	48	46	46	106	92	-13.2
Passenger and other	7 298	7 600	8 008	610	717	717	1 308	1 434	9.6
<i>Travel services</i>	21 440	22 624	25 280	1 973	2 293	2 348	4 101	4 641	13.2
<i>Other services</i>	10 253	11 017	12 350	1 065	1 088	1 089	1 973	2 177	10.3
Services debits	-39 315	-41 078	-44 367	-3 877	-4 042	-3 865	-7 193	-7 907	9.9
<i>Transportation services</i>	-13 796	-14 508	-15 368	-1 281	-1 315	-1 312	-2 481	-2 627	5.9
Freight	-7 500	-7 776	-8 044	-617	-631	-699	-1 289	-1 330	3.2
Passenger and other	-6 296	-6 732	-7 324	-664	-684	-613	-1 192	-1 297	8.8
<i>Travel services</i>	-14 507	-15 090	-15 968	-1 430	-1 563	-1 372	-2 680	-2 935	9.5
<i>Other services</i>	-11 012	-11 480	-13 031	-1 166	-1 164	-1 181	-2 032	-2 345	15.4
Memorandum items:									
Tourism related service credits(c)	25 584	26 728	29 517	2 268	2 657	2 712	4 783	5 369	12.3
Tourism related service debits(c)	-20 287	-21 374	-22 844	-2 055	-2 212	-1 950	-3 798	-4 162	9.6

(a) For sign conventions, see paragraph 10 of the Explanatory Notes.

(b) For more detailed trade in services components, see table 11.

(c) For a more detailed explanation of tourism related services, see paragraphs 16 and 17 of the Explanatory Notes.

	Nov 2006	Dec 2006	Jan 2007	Feb 2007	Mar 2007	Apr 2007	May 2007	Jun 2007	Jul 2007	Aug 2007
	\$m	\$m	\$m	\$m	\$m	\$m	\$m	\$m	\$m	\$m
SEASONALLY ADJUSTED										
Services credits	3 802	3 872	3 898	3 901	3 972	3 959	3 996	4 029	4 084	4 108
Transportation services	723	729	737	737	748	702	703	711	751	743
Freight	53	53	50	49	49	46	46	46	47	47
Passenger and other	670	676	687	687	700	656	657	665	704	696
Travel services	2 055	2 119	2 135	2 134	2 188	2 193	2 219	2 249	2 245	2 260
Other services(b)	1 024	1 024	1 026	1 030	1 036	1 064	1 074	1 069	1 088	1 104
Services debits	-3 660	-3 767	-3 719	-3 748	-3 755	-3 732	-3 801	-3 834	-3 875	-3 889
Transportation services	-1 292	-1 350	-1 293	-1 348	-1 312	-1 221	-1 265	-1 262	-1 292	-1 290
Freight	-691	-676	-677	-675	-672	-668	-660	-654	-654	-664
Passenger and other	-601	-674	-616	-673	-640	-553	-605	-607	-639	-626
Travel services	-1 301	-1 339	-1 337	-1 303	-1 337	-1 372	-1 385	-1 408	-1 397	-1 396
Other services(b)	-1 066	-1 079	-1 089	-1 097	-1 106	-1 139	-1 151	-1 164	-1 185	-1 203
Memorandum items:										
Tourism related service credits(c)	2 410	2 473	2 496	2 508	2 563	2 559	2 564	2 598	2 596	2 614
Tourism related service debits(c)	-1 861	-2 026	-1 861	-1 920	-1 967	-1 939	-1 933	-1 983	-1 990	-1 993

TREND ESTIMATES										
Services credits	3 822	3 858	3 890	3 919	3 946	3 975	4 005	4 037	4 066	4 092
Transportation services	727	733	734	731	726	722	721	723	728	733
Freight	53	52	51	49	48	47	47	46	46	46
Passenger and other	674	681	683	681	678	675	674	677	681	687
Travel services	2 075	2 102	2 128	2 153	2 176	2 198	2 218	2 235	2 250	2 262
Other services	1 020	1 023	1 028	1 035	1 044	1 055	1 067	1 078	1 088	1 097
Services debits	-3 689	-3 715	-3 731	-3 742	-3 754	-3 773	-3 798	-3 827	-3 856	-3 879
Transportation services	-1 309	-1 319	-1 319	-1 308	-1 292	-1 278	-1 270	-1 269	-1 271	-1 273
Freight	-687	-686	-682	-676	-669	-665	-662	-659	-657	-656
Passenger and other	-622	-633	-637	-632	-623	-613	-608	-609	-614	-617
Travel services	-1 314	-1 319	-1 325	-1 334	-1 347	-1 363	-1 378	-1 392	-1 402	-1 410
Other services	-1 066	-1 077	-1 088	-1 100	-1 115	-1 132	-1 150	-1 167	-1 182	-1 195
Memorandum items:										
Tourism related service credits(c)	2 428	2 462	2 493	2 520	2 542	2 560	2 575	2 589	2 600	2 610
Tourism related service debits(c)	-1 897	-1 914	-1 925	-1 933	-1 939	-1 946	-1 957	-1 970	-1 983	-1 990

(a) For sign conventions, see paragraph 10 of the Explanatory Notes.

(b) In using these seasonally adjusted series, care should be exercised because of the difficulties associated with reliably estimating the seasonal pattern.

(c) For a more detailed explanation of tourism related services, see paragraphs 16 and 17 of the Explanatory Notes.

	CREDITS				DEBITS			
	Sep Qtr	Dec Qtr	Mar Qtr	Jun Qtr	Sep Qtr	Dec Qtr	Mar Qtr	Jun Qtr
	2006	2006	2007	2007	2006	2006	2007	2007
	\$m	\$m	\$m	\$m	\$m	\$m	\$m	\$m
Services	11 093	11 692	11 924	11 536	-11 097	-11 333	-10 795	-11 142
Transportation services	2 091	2 257	2 280	1 987	-3 854	-4 044	-3 761	-3 709
Passenger(c)	1 930	2 094	2 139	1 845	-1 683	-1 661	-1 575	-1 604
Freight	161	163	141	142	-1 966	-2 176	-1 986	-1 916
Other(c)	np	np	np	np	-205	-207	-200	-189
Travel services	6 040	6 250	6 662	6 328	-4 181	-3 958	-3 797	-4 032
Business	615	591	635	619	-661	-613	-697	-664
Personal	5 425	5 659	6 027	5 709	-3 520	-3 345	-3 100	-3 368
Education-related	2 860	2 480	2 833	3 139	-265	-166	-172	-177
Other	2 565	3 179	3 194	2 570	-3 255	-3 179	-2 928	-3 191
Communication services(d)	259	194	190	169	-244	-204	-185	-212
Construction services	31	33	36	32	—	—	—	—
Insurance services	176	176	176	176	-225	-225	-225	-225
Financial services	251	251	251	251	-150	-150	-150	-150
Computer and information services	358	421	335	366	-331	-375	-340	-380
Royalties and license fees	206	221	215	226	-750	-856	-811	-840
Other business services	1 319	1 534	1 404	1 632	-944	-1 039	-983	-1 092
Merchanting and other trade-related	186	192	193	211	-52	-55	-52	-50
Operational leasing	10	10	10	12	-212	-230	-208	-186
Miscellaneous business, professional and technical	1 123	1 332	1 201	1 409	-680	-754	-723	-856
Legal, accounting, management consulting and public relations	195	212	214	270	-83	-104	-96	-173
Advertising, market research and public opinion polling	56	57	60	66	-39	-36	-40	-53
Research and development	127	141	118	132	-38	-37	-28	-26
Architectural, engineering and other technical services	293	349	335	375	-137	-123	-141	-146
Agriculture, mining and on-site processing	82	87	88	92	-34	-45	-55	-94
Services between affiliated enterprises n.i.e.	248	356	263	327	-225	-272	-204	-212
Other	122	130	123	147	-124	-137	-159	-152
Personal, cultural, and recreational services	148	154	159	152	-226	-269	-340	-262
Audiovisual and related services	36	38	51	44	-191	-224	-266	-237
Personal, cultural and recreational services	112	116	108	108	-35	-45	-74	-25
Government services n.i.e.	214	201	216	217	-192	-213	-203	-240
Memorandum items:								
Tourism related services(e)	7 030	7 383	7 880	7 224	-5 958	-5 714	-5 462	-5 710

— nil or rounded to zero (including null cells)

np not available for publication but included in totals where applicable, unless otherwise indicated

(a) For sign conventions, see paragraph 10 of the Explanatory Notes.

(b) For more information see paragraphs 14 and 15 of the Explanatory Notes.

(c) Passenger transportation credits include other transportation services credits.

(d) Communications services includes other services n.i.e.

(e) For a more detailed explanation of tourism related services, see paragraphs 16 and 17 of the Explanatory Notes.

	Jun	Jul	Aug	Per cent	2 MONTHS	
	2007	2007	2007	of total	ENDED AUGUST	
	\$m	\$m	\$m	merchandise	2006	2007
				exports(a)		
				%	\$m	\$m
MAJOR COMMODITIES						
011 Meat of bovine animals	374	367	355	2.4	833	722
041 Wheat	116	225	103	0.7	651	328
268 Wool and other animal hair(b)	270	182	119	0.8	320	301
281 Iron ore and concentrates	1 304	1 314	1 486	10.1	2 655	2 800
285 Aluminium ore and concentrates	470	470	537	3.7	1 139	1 006
321 Coal, not agglomerated	1 653	1 602	1 765	12.0	3 995	3 367
333 Crude petroleum oils	655	661	854	5.8	1 333	1 515
334 Refined petroleum oils	250	294	264	1.8	575	558
343 Natural gas	388	428	388	2.6	970	817
684 Aluminium	428	577	513	3.5	1 065	1 091
781 Passenger motor vehicles	211	237	275	1.9	377	512
971 Gold, non-monetary	1 111	1 004	1 096	7.5	1 730	2 100

SECTION AND DIVISION OF THE SITC

0	Food and live animals(b)					
00	Live animals other than fish, crustaceans, molluscs and aquatic invertebrates	101	74	105	0.7	163 179
01	Meat and meat preparations	528	516	521	3.5	1 174 1 036
02	Dairy products and birds' eggs	164	166	185	1.3	381 352
03	Fish (not marine mammals), crustaceans, molluscs and aquatic invertebrates, and preparations thereof(b)	82	70	139	0.9	247 210
04	Cereals and cereal preparations(b)	198	357	221	1.5	970 578
05	Vegetables and fruit	124	122	127	0.9	277 249
06	Sugars, sugar preparations and honey(b)	13	22	25	0.2	46 48
07	Coffee, tea, cocoa, spices, and manufactures thereof	21	24	24	0.2	41 48
08	Feeding stuff for animals (excl. unmilled cereals)(b)	60	55	59	0.4	146 114
09	Miscellaneous edible products and preparations	38	38	39	0.3	79 76
	<i>Total Food and live animals</i>	<i>1 330</i>	<i>1 443</i>	<i>1 446</i>	<i>9.8</i>	<i>3 523 2 889</i>
1	Beverages and tobacco(b)					
11	Beverages(b)	254	290	275	1.9	502 565
12	Tobacco and tobacco manufactures	11	16	11	0.1	22 27
	<i>Total Beverages and tobacco</i>	<i>265</i>	<i>305</i>	<i>286</i>	<i>1.9</i>	<i>524 591</i>
2	Crude materials, inedible, except fuels(b)					
21	Hides, skins and furskins, raw	58	53	63	0.4	104 116
22	Oil seeds and oleaginous fruits	6	13	23	0.2	35 37
23	Crude rubber (incl. synthetic and reclaimed)	—	—	—	—	1 1
24	Cork and wood	94	95	116	0.8	194 211
25	Pulp and waste paper	17	18	20	0.1	25 38
26	Textile fibres and their wastes (not manufactured into yarn or fabric)(b)	342	237	173	1.2	523 410
27	Crude fertilisers (excl. those of Division 56) and crude minerals (excl. coal, petroleum and precious stones)	49	33	54	0.4	85 86
28	Metalliferous ores and metal scrap(b)	2 854	3 176	3 144	21.4	5 804 6 320
29	Crude animal and vegetable materials, n.e.s. (b)	17	21	16	0.1	37 37
	<i>Total Crude materials, inedible, except fuels</i>	<i>3 437</i>	<i>3 646</i>	<i>3 609</i>	<i>24.6</i>	<i>6 808 7 256</i>
3	Mineral fuels, lubricants and related materials(b)					
32	Coal, coke and briquettes	1 665	1 602	1 779	12.1	4 006 3 381
33	Petroleum, petroleum products and related materials(b)	906	957	1 119	7.6	1 911 2 076
34	Gas, natural and manufactured	493	499	549	3.7	1 184 1 047
	<i>Total Mineral fuels, lubricants and related materials</i>	<i>3 065</i>	<i>3 058</i>	<i>3 446</i>	<i>23.4</i>	<i>7 102 6 504</i>

— nil or rounded to zero (including null cells)

(a) Per cent of total merchandise exports is calculated for the most recent month.

(b) Excludes exports commodities subject to a confidentiality restriction. These are included in Division 98.

				Per cent of total merchandise exports(a)	2 MONTHS ENDED AUGUST		
	Jun 2007	Jul 2007	Aug 2007		2006	2007	
	\$m	\$m	\$m	%	\$m	\$m	
SECTION AND DIVISION OF THE SITC							
4	Animal and vegetable oils, fats and waxes(b)						
41	Animal oils and fats	23	17	29	0.2	35	45
42	Fixed vegetable fats and oils, crude, refined or fractionated(b)	6	5	7	—	9	12
43	Fats and oils (processed), waxes and inedible mixtures or preparations, of animal or vegetable origin, n.e.s.	6	7	5	—	11	12
	<i>Total Animal and vegetable oils, fats and waxes</i>	35	28	41	0.3	54	69
5	Chemicals and related products, n.e.s.(b)						
51	Organic chemicals(b)	7	6	11	0.1	17	17
52	Inorganic chemicals(b)	61	72	73	0.5	126	145
53	Dyeing, tanning and colouring materials	59	51	52	0.4	106	103
54	Medicinal and pharmaceutical products(b)	357	393	359	2.4	616	752
55	Essential oils and resinoids and perfume materials; toilet, polishing and cleansing preparations	45	47	47	0.3	82	94
56	Fertilisers (excl. crude)	6	13	41	0.3	14	54
57	Plastics in primary forms(b)	29	27	36	0.2	45	63
58	Plastics in non-primary forms	30	29	37	0.3	59	66
59	Chemical materials and products, n.e.s.	72	80	72	0.5	131	151
	<i>Total Chemicals and related products, n.e.s.</i>	666	718	727	4.9	1 195	1 445
6	Manufactured goods classified chiefly by material(b)						
61	Leather, leather manufactures, and dressed furskins, n.e.s.	24	31	35	0.2	74	66
62	Rubber manufactures, n.e.s.	20	18	24	0.2	34	43
63	Cork and wood manufactures (excl. furniture)(b)	14	13	14	0.1	36	27
64	Paper, paperboard, and articles of paper pulp, of paper or of paperboard	60	61	60	0.4	127	121
65	Textile yarn, fabrics, made-up articles, nes, and related products	34	40	37	0.3	76	77
66	Non-metallic mineral manufactures, n.e.s.(b)	54	61	64	0.4	151	125
67	Iron and steel(b)	96	70	120	0.8	166	190
68	Non-ferrous metals(b)	991	1 239	1 049	7.1	2 160	2 288
69	Manufactures of metals, n.e.s.	82	84	96	0.7	160	179
	<i>Total Manufactured goods classified chiefly by material</i>	1 376	1 617	1 500	10.2	2 983	3 117
7	Machinery and transport equipment(b)						
71	Power generating machinery and equipment	100	102	95	0.6	235	197
72	Machinery specialised for particular industries	140	146	156	1.1	262	302
73	Metal working machinery	20	15	20	0.1	29	35
74	General industrial machinery and equipment, n.e.s. and machine parts, n.e.s.(b)	136	152	147	1.0	277	299
75	Office machines and automatic data processing machines	110	119	116	0.8	189	235
76	Telecommunications and sound recording and reproducing apparatus and equipment(b)	73	65	55	0.4	172	121
77	Electrical machinery, apparatus, appliances, parts (incl. non-electrical counterparts of electrical domestic equipment)(b)	154	155	167	1.1	307	321
78	Road vehicles (incl. air-cushion vehicles)	306	370	383	2.6	551	753
79	Transport equipment (excl. road vehicles)(b)	87	87	86	0.6	160	173
	<i>Total Machinery and transport equipment</i>	1 126	1 211	1 225	8.3	2 182	2 436

— nil or rounded to zero (including null cells)

(a) Per cent of total merchandise exports is calculated for the most recent month.

(b) Excludes exports commodities subject to a confidentiality restriction. These are included in Division 98.

				Per cent of total merchandise exports(a)	2 MONTHS ENDED AUGUST	
	Jun 2007	Jul 2007	Aug 2007		2006	2007
	\$m	\$m	\$m	%	\$m	\$m
SECTION AND DIVISION OF THE SITC						
8	Miscellaneous manufactured articles(b)					
81	Prefabricated buildings; sanitary, plumbing, heating and lighting fixtures and fittings, n.e.s.	11	14	16	0.1	22 30
82	Furniture, parts thereof; bedding, mattresses, mattress supports, cushions and similar stuffed furnishings	8	8	8	0.1	28 17
83	Travel goods, handbags and similar containers	3	2	2	—	4 4
84	Articles of apparel and clothing accessories	16	19	26	0.2	48 45
85	Footwear(b)	4	4	5	—	7 9
87	Professional, scientific and controlling instruments and apparatus, n.e.s.	162	149	161	1.1	286 310
88	Photographic apparatus, equipment and supplies and optical goods, n.e.s.; watches and clocks	25	26	30	0.2	61 56
89	Miscellaneous manufactured articles, n.e.s. <i>Total Miscellaneous manufactured articles</i>	201 430	206 428	209 456	1.4 3.1	397 852 415 885
9	Commodities and transactions not classified elsewhere in the SITC(c)					
93	Special transactions and commodities not classified according to kind	125	109	107	0.7	241 216
95	Gold coin whether or not legal tender, and other coin being legal tender	14	10	13	0.1	8 23
96	Coin (excl. gold coin), not being legal tender	—	—	—	—	— —
97	Gold, non-monetary (excl. gold ores and concentrates)	1 111	1 004	1 096	7.5	1 730 2 100
98	Combined confidential items excl. some of SITC 280 (exports only) and some of SITCs 510 and 520 (imports only)(c)	907	886	745	5.1	1 413 1 631
	<i>Total commodities and transactions not classified elsewhere in the SITC</i>	2 157	2 009	1 961	13.3	3 392 3 970
	Total merchandise exports	13 886	14 464	14 697	100.0	28 615 29 161
	Balance of Payments Adjustments	107	26	172	. .	308 198
	Goods Credits (exports) on a Balance of Payments Basis	13 993	14 490	14 869	. .	28 923 29 359

. . not applicable

— nil or rounded to zero (including null cells)

(a) Per cent of total merchandise exports is calculated for the most recent month.

(b) Excludes exports commodities subject to a confidentiality restriction. These are included in Division 98.

(c) Includes exports commodities subject to a confidentiality restriction.

				Per cent	2 MONTHS	
	Jun	Jul	Aug	of total	ENDED AUGUST	
	2007	2007	2007	merchandise	2006	2007
	\$m	\$m	\$m	imports(a)	\$m	\$m
				%		
MAJOR COMMODITIES						
333 Crude petroleum oils	1 166	1 171	1 389	8.2	2 311	2 560
334 Refined petroleum oils	774	580	709	4.2	1 380	1 289
542 Medicaments	550	590	561	3.3	1 122	1 151
641 Paper and paperboard	153	192	201	1.2	360	393
752 Automatic data processing machines	656	583	568	3.4	1 060	1 151
759 Parts and accessories of office machines	202	189	180	1.1	373	369
764 Telecommunications equipment	546	502	504	3.0	989	1 006
781 Passenger motor vehicles	1 177	1 045	1 157	6.8	2 132	2 202
782 Motor vehicles for the transport of goods	484	427	468	2.8	667	895
784 Parts and accessories of motor vehicles	217	205	237	1.4	458	442
792 Aircraft and associated equipment	361	101	417	2.5	509	518
971 Gold, non-monetary	648	708	745	4.4	783	1 452

SECTION AND DIVISION OF THE SITC

0	Food and live animals					
00	Live animals other than fish, crustaceans, molluscs and aquatic invertebrates	7	7	7	—	23 14
01	Meat and meat preparations	37	30	31	0.2	49 60
02	Dairy products and birds' eggs	31	33	38	0.2	69 71
03	Fish (not marine mammals), crustaceans, molluscs and aquatic invertebrates, and preparations thereof	74	81	97	0.6	164 178
04	Cereals and cereal preparations	41	49	65	0.4	95 114
05	Vegetables and fruit	99	110	133	0.8	202 243
06	Sugars, sugar preparations and honey	19	18	21	0.1	33 38
07	Coffee, tea, cocoa, spices, and manufactures thereof	63	81	98	0.6	148 179
08	Feeding stuff for animals (excl. unmilled cereals)	36	40	45	0.3	73 85
09	Miscellaneous edible products and preparations	92	119	121	0.7	192 240
	<i>Total food and live animals</i>	498	568	655	3.9	1 049 1 223
1	Beverages and tobacco					
11	Beverages	71	85	130	0.8	173 215
12	Tobacco and tobacco manufactures	17	17	18	0.1	34 35
	<i>Total beverages and tobacco</i>	87	102	148	0.9	207 250
2	Crude materials, inedible, except fuels					
21	Hides, skins and furskins, raw	—	—	—	—	— —
22	Oil seeds and oleaginous fruits	17	6	4	—	5 9
23	Crude rubber (incl. synthetic and reclaimed)	12	14	15	0.1	28 29
24	Cork and wood	48	50	54	0.3	97 104
25	Pulp and waste paper	21	21	27	0.2	52 47
26	Textile fibres and their wastes (not manufactured into yarn or fabric)	11	12	13	0.1	26 25
27	Crude fertilisers (excl. those of Division 56) and crude minerals (excl. coal, petroleum and precious stones)	16	15	24	0.1	20 39
28	Metalliferous ores and metal scrap	42	77	39	0.2	123 117
29	Crude animal and vegetable materials, n.e.s.	19	20	21	0.1	41 41
	<i>Total crude materials, inedible, except fuels</i>	187	214	197	1.2	392 411
3	Mineral fuels, lubricants and related materials(b)					
32	Coal, coke and briquettes	1	2	1	—	4 3
33	Petroleum, petroleum products and related materials(b)	1 983	1 785	2 123	12.5	3 754 3 909
34	Gas, natural and manufactured	102	72	128	0.8	162 201
	<i>Total mineral fuels, lubricants and related materials</i>	2 086	1 860	2 253	13.3	3 920 4 113

— nil or rounded to zero (including null cells)

(a) Per cent of total merchandise imports is calculated for the most recent month.

(b) Excludes imports commodities subject to a confidentiality restriction. These are included in Division 98.

				Per cent of total merchandise imports(a)	2 MONTHS ENDED AUGUST	
	Jun	Jul	Aug		
	2007	2007	2007		2006	2007
	\$m	\$m	\$m	%	\$m	\$m
SECTION AND DIVISION OF THE SITC						
4	Animal and vegetable oils, fats and waxes					
41	Animal oils and fats	1	2	3	—	2 5
42	Fixed vegetable fats and oils, crude, refined or fractionated	27	48	35	0.2	77 83
43	Fats and oils (processed), waxes and inedible mixtures or preparations, of animal or vegetable origin, n.e.s.	4	6	6	—	10 12
	<i>Total animal and vegetable oils, fats and waxes</i>	33	56	44	0.3	89 100
5	Chemicals and related products, n.e.s.(b)					
51	Organic chemicals(b)	214	287	324	1.9	496 611
52	Inorganic chemicals(b)	83	96	90	0.5	172 186
53	Dyeing, tanning and colouring materials	46	48	55	0.3	101 103
54	Medicinal and pharmaceutical products	681	717	697	4.1	1 334 1 413
55	Essential oils and resinoids and perfume materials; toilet, polishing and cleansing preparations	112	126	145	0.9	283 271
56	Fertilisers (excl. crude)	70	89	35	0.2	89 124
57	Plastics in primary forms(b)	133	138	153	0.9	262 291
58	Plastics in non-primary forms	99	104	109	0.6	205 213
59	Chemical materials and products, n.e.s.(b)	152	145	162	1.0	298 307
	<i>Total chemicals and related products, n.e.s.</i>	1 590	1 750	1 770	10.5	3 241 3 520
6	Manufactured goods classified chiefly by material(b)					
61	Leather, leather manufactures, and dressed furskins, n.e.s.	14	14	15	0.1	24 28
62	Rubber manufactures, n.e.s.(b)	200	212	212	1.3	401 424
63	Cork and wood manufactures (excl. furniture)	47	48	56	0.3	98 105
64	Paper, paperboard, and articles of paper pulp, of paper or of paperboard(b)	201	247	264	1.6	462 511
65	Textile yarn, fabrics, made-up articles n.e.s. and related products	187	201	221	1.3	434 421
66	Non-metallic mineral manufactures, n.e.s.	190	193	201	1.2	376 395
67	Iron and steel(b)	324	331	323	1.9	531 654
68	Non-ferrous metals(b)	106	117	141	0.8	314 258
69	Manufactures of metals, n.e.s.	375	394	460	2.7	713 854
	<i>Total manufactured goods classified chiefly by material</i>	1 643	1 758	1 892	11.2	3 353 3 650
7	Machinery and transport equipment					
71	Power generating machinery and equipment	318	353	447	2.6	612 799
72	Machinery specialised for particular industries	571	583	659	3.9	1 162 1 241
73	Metal working machinery	71	57	67	0.4	126 125
74	General industrial machinery and equipment, n.e.s. and machine parts, n.e.s.	684	739	842	5.0	1 547 1 581
75	Office machines and automatic data processing machines	914	822	806	4.8	1 538 1 629
76	Telecommunications and sound recording and reproducing apparatus and equipment	840	820	858	5.1	1 629 1 678
77	Electrical machinery, apparatus, appliances, parts (incl. non-electrical counterparts of electrical domestic equipment)	768	789	778	4.6	1 426 1 567
78	Road vehicles (incl. air-cushion vehicles)	2 035	1 842	2 043	12.1	3 559 3 885
79	Transport equipment (excl. road vehicles)	455	159	492	2.9	617 652
	<i>Total machinery and transport equipment</i>	6 656	6 164	6 993	41.3	12 215 13 156

— nil or rounded to zero (including null cells)

(a) Per cent of total merchandise imports is calculated for the most recent month.

(b) Excludes imports commodities subject to a confidentiality restriction. These are included in Division 98.

				Per cent of total merchandise imports(a)	2 MONTHS ENDED AUGUST	
	Jun	Jul	Aug		2006	2007
	2007	2007	2007		\$m	\$m
	\$m	\$m	\$m	%	\$m	\$m
SECTION AND DIVISION OF THE SITC						
8	Miscellaneous manufactured articles					
81	Prefabricated buildings; sanitary, plumbing, heating and lighting fixtures and fittings, n.e.s.					
	46	54	58	0.3	104	112
82	Furniture, parts thereof; bedding, mattresses, mattress supports, cushions and similar stuffed furnishings					
	173	203	231	1.4	406	434
83	Travel goods, handbags and similar containers					
	48	59	64	0.4	106	123
84	Articles of apparel and clothing accessories					
	317	405	421	2.5	803	827
85	Footwear					
	80	112	122	0.7	234	234
87	Professional, scientific and controlling instruments and apparatus, n.e.s.					
	370	362	361	2.1	699	723
88	Photographic apparatus, equipment and supplies and optical goods, n.e.s.; watches and clocks					
	102	115	119	0.7	223	233
89	Miscellaneous manufactured articles, n.e.s.					
	822	731	805	4.8	1 559	1 536
	<i>Total miscellaneous manufactured articles</i>					
	1 959	2 042	2 180	12.9	4 134	4 222
9	Commodities and transactions not classified elsewhere in the SITC(b)					
93	Special transactions and commodities not classified according to kind					
	3	3	2	—	6	5
95	Gold coin whether or not legal tender, and other coin being legal tender					
	—	—	—	—	—	—
96	Coin (excl. gold coin), not being legal tender					
	—	—	—	—	—	—
97	Gold, non-monetary (excl. gold ores and concentrates)					
	648	708	745	4.4	783	1 452
98	Combined confidential items excl. some of SITC 280 (exports only) and some of SITCs 510 and 520 (imports only)(b)					
	23	22	46	0.3	18	69
	<i>Total commodities and transactions not classified elsewhere in the SITC</i>					
	674	734	794	4.7	808	1 527
Total merchandise imports						
	15 414	15 247	16 924	100.0	29 408	32 171
Balance of Payments Adjustment						
	275	218	226	. .	493	444
Goods Debits (imports) on a Balance of Payments Basis						
	15 689	15 465	17 150	. .	29 901	32 615

. . not applicable

(a) Per cent of total merchandise imports is calculated for the most recent month.

— nil or rounded to zero (including null cells)

(b) Includes imports commodities subject to a confidentiality restriction.

	EXPORTS				IMPORTS				BALANCE OF MERCHANDISE TRADE	
	2006-07	August	2	2	2006-07	August	2	2	2006-07	2
		2007	months ended August	months ended August		2007	months ended August	months ended August		months ended August
	\$m	\$m	\$m	\$m	\$m	\$m	\$m	\$m	\$m	\$m
Belgium	1 326	101	175	232	1 606	141	250	267	-280	-35
Brazil	854	89	166	171	859	97	153	160	-4	11
Canada	1 768	141	304	268	2 077	180	323	337	-309	-69
China	22 800	1 797	3 426	3 824	27 139	2 588	4 395	4 963	-4 338	-1 139
Denmark	189	15	30	27	1 138	73	181	143	-949	-115
Egypt(b)	337	15	53	63	17	1	3	3	320	60
Fiji	383	31	76	66	148	10	32	21	235	45
Finland	1 632	105	202	251	848	88	133	157	784	95
France	1 365	142	254	375	3 901	634	628	953	-2 537	-578
Germany	1 444	103	221	208	9 274	895	1 507	1 714	-7 831	-1 506
Hong Kong (Sar of China)	3 038	217	501	449	1 419	131	283	258	1 619	192
India	10 098	937	1 682	1 756	1 314	149	213	268	8 783	1 488
Indonesia	4 240	371	852	675	4 646	435	602	795	-407	-121
Iran	204	16	32	25	41	3	9	6	163	19
Iraq	96	2	92	3	36	—	20	—	61	3
Ireland	209	20	30	37	2 120	184	347	344	-1 911	-307
Israel	188	17	40	26	640	46	101	90	-451	-64
Italy	1 742	145	226	263	4 869	388	803	808	-3 127	-545
Japan	32 633	2 798	5 836	5 655	17 404	1 300	2 910	2 700	15 229	2 955
Korea, Republic of	13 084	1 193	2 251	2 261	6 012	545	935	995	7 072	1 266
Kuwait	493	49	57	101	231	77	54	78	262	23
Malaysia	3 103	304	473	548	6 591	594	1 005	1 296	-3 488	-748
Mexico	837	40	121	128	1 102	98	191	187	-266	-59
Netherlands	2 977	214	526	419	1 495	122	249	232	1 482	187
New Zealand	9 434	871	1 596	1 676	5 615	590	956	1 080	3 819	596
Pakistan	320	60	36	76	151	13	23	24	169	52
Papua New Guinea	1 524	110	184	290	2 215	256	315	493	-692	-202
Philippines	1 056	150	239	223	753	73	123	149	303	74
Saudi Arabia	2 025	177	302	318	943	128	102	189	1 082	129
Singapore	4 638	457	960	716	10 130	826	1 752	1 544	-5 492	-828
South Africa	2 316	287	426	486	1 402	139	270	259	914	227
Spain	1 254	98	221	156	1 624	167	253	305	-370	-149
Sweden	351	44	80	79	2 287	201	407	392	-1 936	-313
Switzerland	1 128	256	38	504	1 917	207	333	373	-789	131
Taiwan	6 186	547	1 058	1 076	4 406	370	685	732	1 780	344
Thailand	4 256	391	710	783	7 210	635	1 045	1 217	-2 954	-434
Turkey	529	41	60	135	437	28	57	65	93	69
United Arab Emirates	2 392	395	232	861	1 751	283	360	472	642	389
United Kingdom	6 146	307	1 370	738	7 407	1 131	970	2 206	-1 260	-1 468
United States of America	9 803	866	1 610	1 698	24 923	2 019	4 155	3 834	-15 120	-2 136
Viet Nam	1 630	93	450	189	4 522	394	1 043	671	-2 892	-482
Other Countries	8 101	684	1 416	1 327	8 186	682	1 233	1 394	-84	-67
Total	168 129	14 697	28 615	29 161	180 806	16 924	29 408	32 171	-12 677	-3 010
APEC	121 023	10 438	20 722	20 614	128 474	11 239	21 079	21 638	-7 451	-1 023
ASEAN	19 052	1 781	3 704	3 164	34 967	3 069	5 766	5 891	-15 915	-2 727
Developing Countries	87 390	7 769	14 665	15 224	84 712	7 909	13 807	14 944	2 678	280
Least Developed Countries	1 559	118	272	246	246	19	42	38	1 313	208
European Union(c)	19 193	1 338	3 433	2 872	39 009	4 270	6 113	7 957	-19 816	-5 085
OECD	88 241	7 542	15 229	15 174	99 202	9 273	16 061	17 621	-10 962	-2 447

— nil or rounded to zero (including null cells)

(a) See Time series spreadsheets for details of all countries.

(b) Exports of Alumina to Egypt are excluded from country total and included in the 'Other Countries' category.

(c) The European Union includes 27 member countries.

	2006-07	August 2007	2 MONTHS ENDED AUGUST	
			2006	2007
	\$m	\$m	\$m	\$m
EXPORTS (a)				
New South Wales	28 066	2 479	4 917	4 994
Victoria	20 047	1 711	3 394	3 496
Queensland	35 437	2 823	6 398	5 634
South Australia	9 015	835	1 439	1 738
Western Australia	60 539	5 492	9 935	10 694
Tasmania	3 712	374	575	666
Northern Territory	4 014	349	722	646
Australian Capital Territory	8	2	—	2
State not available for publication(b)	809	53	155	124
Re-exports	6 481	579	1 079	1 169
Total exports	168 129	14 697	28 615	29 161
IMPORTS				
New South Wales	69 790	6 470	11 620	12 317
Victoria	51 325	4 832	8 557	8 915
Queensland	27 206	2 478	4 472	4 960
South Australia	6 583	572	1 030	1 084
Western Australia	22 125	2 314	3 143	4 409
Tasmania	614	53	128	99
Northern Territory	2 846	204	458	387
Australian Capital Territory	317	1	1	2
Total imports	180 806	16 924	29 408	32 171

— nil or rounded to zero (including null cells)

(a) State in which the final stage of production or manufacture occurs.

(b) Exports of Alumina to Bahrain, Egypt and Iceland are excluded from the state totals and included in 'State not available for publication category'.

PERIOD AVERAGE EXCHANGE RATES (a): Per Australian dollar

<i>Period</i>	<i>United States dollar</i>	<i>UK pound sterling</i>	<i>Euro</i>	<i>Japanese yen</i>	<i>Trade-weighted index of value of the \$A(b)</i>
FINANCIAL YEAR					
2004-05	0.7529	0.4052	0.5918	80.45	62.7
2005-06	0.7474	0.4205	0.6143	85.90	63.3
2006-07	0.7863	0.4066	0.6018	93.21	64.8
MONTHS					
2006					
June	0.7402	0.4012	0.5842	84.80	62.0
July	0.7514	0.4075	0.5920	86.89	63.0
August	0.7630	0.4034	0.5958	88.45	63.7
September	0.7566	0.4009	0.5938	88.58	63.2
October	0.7539	0.4021	0.5975	89.46	63.2
November	0.7721	0.4040	0.5995	90.52	64.0
December	0.7861	0.4002	0.5949	92.05	64.4
2007					
January	0.7839	0.4002	0.6027	94.28	64.7
February	0.7823	0.3993	0.5981	94.29	64.4
March	0.7919	0.4067	0.5980	92.90	64.8
April	0.8263	0.4156	0.6117	98.17	67.1
May	0.8252	0.4157	0.6103	99.58	67.0
June	0.8423	0.4238	0.6274	103.34	68.5
July	0.8675	0.4266	0.6325	105.47	69.7
August	0.8282	0.4123	0.6083	96.63	66.8

- (a) These exchange rates and the trade-weighted index are derived using rates provided by the Reserve Bank of Australia in respect of each trading day.
- (b) May 1970 = 100. The Trade-weighted index is reweighted annually on 1 October and on special occasions as required.

EXPLANATORY NOTES

INTRODUCTION

1 This publication presents preliminary estimates of Australia's international trade in goods and services on a balance of payments basis and merchandise import and export statistics on a recorded trade basis.

2 Merchandise trade statistics on a recorded trade basis are compiled from information submitted by exporters and importers or their agents to the Australian Customs Service (ACS). Adjustments for coverage, timing and valuation are made to recorded trade data to convert them to a balance of payments basis. The main source for services data is the quarterly Survey of International Trade in Services.

3 More comprehensive quarterly estimates of Australia's trade in goods and services, together with comprehensive details of Australia's balance of payments are included in the quarterly publication, *Balance of Payments and International Investment Position, Australia* (cat. no. 5302.0). Detailed monthly statistics on merchandise trade are available on Time Series Spreadsheets or by subscription to tailored services.

CONCEPTS, SOURCES AND METHODS

4 The conceptual framework used in compiling Australia's merchandise trade statistics can be found in *International Merchandise Trade, Australia: Concepts, Sources and Methods, 2001* (cat. no. 5489.0).

5 The conceptual framework used in compiling Australia's balance of payments statistics is based on the Fifth Edition of the International Monetary Fund's *Balance of Payments Manual* (BPM5,1993). Descriptions of the underlying concepts and structure of the balance of payments and the sources, methods and terms used in compiling the estimates are presented in *Balance of Payments and International Investment Position, Australia: Concepts, Sources and Methods, 1998* (cat. no. 5331.0). To bring merchandise trade statistics on a recorded trade basis to a balance of payments basis, timing adjustments are made to ensure that the transaction is recorded in the period in which ownership changed, rather than in the period in which the transaction was recorded by ACS. Adjustments are also made to account for the change of ownership of goods not included in merchandise trade statistics. Chapter 6 of cat. no. 5331.0 provides more detail on the relationship between statistics on international merchandise trade on a recorded trade basis and on a balance of payments basis.

6 Both of the Concepts, Sources and Methods publications are available to download for free from the ABS website. Select *Methods, Classifications, Concepts & Standards*, then choose *ABS concepts, classifications and statistical standards* and then the catalogue numbers as above.

SEASONAL ADJUSTMENT

7 Monthly original estimates are volatile, being subject to calendar-related and large irregular influences. Seasonally adjusted estimates are derived by estimating and removing systematic calendar related effects, such as seasonal and trading day influences, from the original series. Trading day effects are removed from the original estimates prior to the seasonal adjustment process. Seasonal adjustment does not aim to remove the irregular or non-seasonal influences which may be present in any particular month. These irregular influences may reflect both random economic events and difficulties of statistical recording. The estimates of international trade in goods and services on a balance of payments basis are seasonally adjusted. The merchandise exports and imports statistics on a recorded trade basis are not.

8 The seasonally adjusted statistics in this publication use the concurrent seasonal adjustment technique to estimate factors for the current and previous months. Under this method, the estimates of seasonal factors are fine tuned as new original estimates become available each period. The seasonally adjusted estimates are subject to revisions at each reference month as the estimates of seasonal factors are improved.

EXPLANATORY NOTES *continued*

TREND ESTIMATES

9 The month-to-month movements of the seasonally adjusted estimates may not be reliable indicators of trend behaviour because they include irregular or non-seasonal movements. Trend estimates are derived by applying a 13-term Henderson moving average to the seasonally adjusted series. The use of a 13-term Henderson average can result in revisions to the estimates for the most recent six months as additional observations become available. Revisions can also occur because of changes in the original data and as a result of the re-estimation of the seasonal factors.

SIGN CONVENTION

10 In keeping with balance of payments conventions, where statistics are on a balance of payments basis, credit entries (exports) are shown without sign and debit items (imports) are shown as negative entries. For statistics on a recorded trade basis, both imports and exports are shown without sign. The calculation of percentage changes on balance of payments debit items are made without regard to sign. References to balance of payments debit items in Key Figures, Key Points, and Analysis and Comments are also made without regard to sign.

COMMODITY BREAKDOWNS OF GOODS

11 For details of the classification used for goods exports on a balance of payments basis (credits), see table 6.6 in *Balance of Payments and International Investment Position, Australia: Concepts, Sources and Methods, 1998* (cat. no. 5331.0).

12 Details of the classification of goods imports on a balance of payments basis (debits) are provided in table 6.7 in cat. no. 5331.0.

13 The recorded trade statistics shown in tables 12 and 13 are classified by the Standard International Trade Classification (SITC). The first section of tables 12 and 13 show the most significant commodities (by value) at the SITC 3 digit level. Imports and exports of goods at a more detailed level are available from the Time Series spreadsheets.

COMMODITY BREAKDOWNS OF SERVICES

14 The quarterly detailed services data published in table 11 are consistent with the monthly aggregates shown in table 9.

15 Monthly indicators for many of the services components that are only surveyed quarterly are not available. In particular, the Freight and Other transportation components of Total services credits are not available for publication on a monthly basis. The estimates for these items shown in table 9 are therefore derived by dividing the quarterly estimate by three. Where quarterly survey data are not available, freight debits are derived directly from imports data for the reference month as a difference between total merchandise cost, insurance and freight (CIFE) and free on board (FOB), adjusted to reflect timing and processing adjustments. For freight credits and other transportation credits and debits, estimates are derived by extrapolating the last month's data by an average of movements for the same month over the three previous years.

TOURISM RELATED SERVICES

16 The tourism related services memorandum items provide timely indicators of the movements in tourism related activities, not an absolute measure of the level of these activities. These series are not compiled on a balance of payments conceptual basis. However, they do provide a reasonable approximation of world tourism related activities.

17 The memorandum items have been derived by re-aggregating relevant components of the international trade in services series of the balance of payments accounts. The tourism related indicator has been derived by combining total travel services (business, education-related and other personal travel), passenger fares, and the air transport component of other transportation services which relates to agency fees and commission receipts.

EXPLANATORY NOTES *continued*

SERVICES BY STATE AND BY PARTNER COUNTRY

18 Annual services data by state and by partner country are released twice yearly. Calendar year data are usually released with the March issue of this publication and financial year data are released with the September issue. Refer to Time Series Data for details.

19 Services credits are classified by the state of provision, while services debits are classified by the state of consumption. The state allocations for transportation, travel and communication services are based on a number of indicators including merchandise trade statistics by state, overseas passenger arrivals and departures by state of clearance and data provided by the Department of Education, Science and Training. The allocation for other services (about 25% of all trade in services) is primarily based on the location of the business reporting the information, which serves as a proxy for the state of provision/consumption of that service. The data should be used with care but are considered suitable for analysis over time.

20 A comprehensive explanation of the data sources used and the methodology applied in the compilation of partner country statistics is provided in Chapter 17 of *Balance of Payments and International Investment Position, Australia - Concepts, Sources and Methods* (cat. no. 5331.0). Approximately 7% of total services credits and 5% of total services debits for 2005–06 are either confidential, or unable to be allocated to individual countries.

ABS DATA AVAILABLE

21 More detailed balance of payments and recorded merchandise trade data, including forward seasonal factors are available as time series spreadsheets or data cubes from the ABS website.

22 More detailed merchandise trade data by commodity, country and state, and statistics included in this and related publications are available on request. Inquiries should be made to the National Information and Referral Service as shown on the back of this publication.

RELATED PRODUCTS AND PUBLICATIONS

23 Users may also wish to refer to the following publications which can be downloaded free of charge from the ABS web site:

- *Balance of Payments and International Investment Position, Australia* (cat. no. 5302.0) – issued quarterly
- *International Merchandise Imports, Australia* (cat. no. 5439.0) – issued monthly
- *International Trade Price Indexes, Australia* (cat. no. 6457.0) – issued quarterly
- *Balance of Payments and International Investment Position, Australia: Concepts, Sources and Methods* (cat. no. 5331.0)
- *Information Paper: Quality of Australian Balance of Payments Statistics* (cat. no. 5342.0)
- *International Merchandise Trade, Australia: Concepts, Sources and Methods* (cat. no. 5489.0)
- *A Guide to Australian Balance of Payments and International Investment Position Statistics* (cat. no. 5362.0.55.001).

24 Current publications produced by the ABS are listed in the Catalogue of Publications and Products (cat. no. 1101.0). The Catalogue is available from any ABS office or from this site. The ABS also issues a daily Release Advice on the web site which details products to be released in the week ahead.

CAUTIONARY NOTE

25 The tables in this publication are presented on two bases. Tables 1–11 contain estimates of Australia's international trade in goods and services which have been adjusted for coverage, valuation and timing to a balance of payments basis. Tables 12–15 contain estimates of merchandise exports and imports based on Australian Customs Service records. Paragraph 5 of the Explanatory Notes provides an explanation of the difference between these bases.

EXPLANATORY NOTES *continued*

ROUNDING

26 Where figures have been rounded, discrepancies may occur between sums of the component items and totals. Percentage movements are calculated from data at the level of precision presented in this publication (i.e. \$m) except for international merchandise trade tables.

EXPLANATORY NOTES *continued*

ABBREVIATIONS

\$b	billion (thousand million) dollars
\$m	million dollars
ABS	Australian Bureau of Statistics
APEC	Asia Pacific Economic Co-operation
ASEAN	Association of South-East Asian Nations
n.e.s.	not elsewhere specified
n.i.e.	not included elsewhere
OECD	Organisation for Economic Co-operation and Development
SAR	Special Administrative Region
SITC	Standard International Trade Classification

APPENDIX RELATED ARTICLES

<i>Article</i>	<i>Source(a)</i>	<i>Issue</i>
Investment		
Foreign ownership of equity	5302.0	Sep qtr 2006
Kangaroo bonds	5302.0	Sep qtr 2004
Gross external debt	5302.0	Sep qtr 2003
Measuring Australia's foreign currency exposure	5302.0	Dec qtr 2001
Balance of payments		
International comparison of balance of payments statistics	(b) 5363.0	1999–2000
The Sydney Olympic Games Update	5368.0	Jul 2000
The Sydney Olympic Games	5302.0	Sep qtr 1999
Merchandise trade		
Number and characteristics of Australian exporters	5368.0.55.006	2005–2006
New methodology for deriving counts of Australian exports	5368.0	Feb 2006
Export and Import Invoice Currencies, 2005	5368.0	Jun 2005
Australia's Importers, 2003–04	5368.0	Nov 2004
Australia's Exporters, 2003–04	5368.0	Oct 2004
Australia's Trade with the USA	5368.0	Mar 2004
Trade through Australia's ports	5422.0	Sep qtr 2002
Australia's trade in wine	5422.0	Dec qtr 2001
Australia's export markets, 1991–92 to 2000–01	5422.0	Jun qtr 2001
Major commodities traded by Australia, 1991 to 2000	(b) 5422.0	Dec qtr 2000
Australia's trade in crude petroleum	5422.0	Mar qtr 2000
Australia's merchandise trade with the Republic of Korea	5422.0	Sep qtr 1999
Australia's merchandise trade with Japan	5422.0	Mar qtr 1999
Bilateral merchandise trade statistics reconciliation: Australia and the European Union, 1992 to 1997	5422.0	Sep qtr 1998
Trade in services		
International trade in services by partner country, 2006, preliminary	5368.0	Dec 2006
Changes to International Trade in Services Statistics, August 2006	5368.0	Aug 2006
Changes to International trade in services travel statistics	5368.0	Aug 2005
International trade in education services	5302.0	Sep 2001
Finance		
Impact of 2003–2004 farm season on Australian production	1350.0	Oct 2003
Recent trends in construction and first home buyers finance	5609.0	Mar 2002
Household sector data in the financial accounts	5232.0	Mar qtr 2002
Investment Managers	5655.0	Jun qtr 2000
Venture capital, 1999–2000	5611.0	2000–01
Technical information		
Changes on 1 January 2007 to Statistical Codes in the AHECC and the Customs Tariff	1233.0.55.001	Nov 2006
ABS implementation in January 2007 of revisions to international trade classifications, 2007	5368.0.55.005	June 2006
Revised Treatment of Goods for Processing in Merchandise Trade and Balance of Payments Statistics	5368.0	May 2006
Impact of Customs and ABS changes on import statistics from October 2005	5439.0	Oct 2005
ABS Management of the Impact of the Implementation of the Imports Component of the New Customs System	5439.0	Aug 2005
Changes to country and port classifications	5368.0	May 2003
Implementation of New Customs Systems	5368.0	Aug 2004
The effect of customs changes on export statistics	5422.0	Jun qtr 2002
Harmonized system changes	5422.0	Sep qtr 2001
International trade review: data quality and client queries	5422.0	Jun qtr 2000
Data confidentiality	5422.0	Dec qtr 1999

(a) In the ABS web site home page, select Key Products; Papers & Articles; ABS Articles; Feature Articles by Catalogue Number.

(b) This article can be found in pdf format by referring to the Details page of the specified issue of this publication on the ABS web site and click on Download Now.

FOR MORE INFORMATION . . .

INTERNET **www.abs.gov.au** the ABS website is the best place for data from our publications and information about the ABS.

LIBRARY A range of ABS publications are available from public and tertiary libraries Australia wide. Contact your nearest library to determine whether it has the ABS statistics you require, or visit our website for a list of libraries.

INFORMATION AND REFERRAL SERVICE

Our consultants can help you access the full range of information published by the ABS that is available free of charge from our website, or purchase a hard copy publication. Information tailored to your needs can also be requested as a 'user pays' service. Specialists are on hand to help you with analytical or methodological advice.

PHONE 1300 135 070
EMAIL client.services@abs.gov.au
FAX 1300 135 211
POST Client Services, ABS, GPO Box 796, Sydney NSW 2001

FREE ACCESS TO STATISTICS

All statistics on the ABS website can be downloaded free of charge.

WEB ADDRESS www.abs.gov.au



2536800008079

ISSN 1328 2778

RRP \$26.00